

Please print and fill out this form and either fax or mail it to us along with your Order Form:

fax: 520 882 9663

mail: Martin McCrea Couture
1950 East 17th Street
Tucson, AZ 85719

Martin McCrea



Couture

Custom Size Form

http://martinmccrea.com/custom_size_form.pdf

Use the diagram to the right as reference to fill in all of the measurements. There are measuring tips and a size comparison chart on the page 2.

Blouses, Jackets and Dresses:

- Bust: _____
Front Bust: _____
Back Bust: _____
Underbust: _____
Shoulder to Tip of Bust (1): _____
Shoulders (2): _____
Neck to Shoulder (3): _____
Shoulder to Wrist* (4): _____
Scythe (5): _____
Biceps: _____
Wrist: _____

Skirts and Dresses:

- Waist: _____
Hips: _____

Dresses Only:

- Back Waist (6): _____
Waist to Floor (7): _____
Shoulder to Floor (8): _____

* On the measurement from the shoulder to the wrist keep the elbow slightly bent.

Custom size fees (Plus size fees are included):

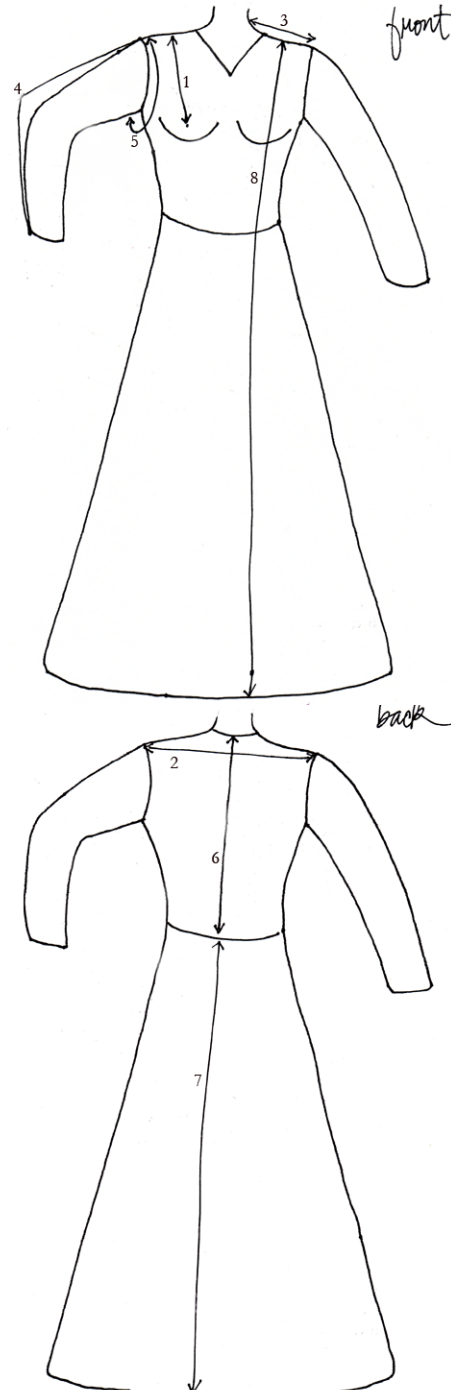
XS — XL : \$75

2X & 3X : \$100

4X & 5X : \$150

Download Order Form at:

http://martinmccrea.com/order_form.pdf



Tips on Measuring:

Bust: Measure around the fullest part of the bust.

Front Bust & Back Bust: Measure from under the arm at the side seam over the fullest part of the bust to the opposite side seam. Repeat for the back. Together they should equal the bust measurement.

Scythe: Measure under the arm and over the top of the shoulder loosely. This is a measurement for the “armhole”.

Shoulder to Tip of Breast: Measure from the top center of the shoulder to the center tip of the breast.

Shoulders: Measure from the top outside of the shoulders (shoulder seam) across the back.

Waist: Measure around the natural waistline. Be sure to keep the tape measurer comfortably loose.

Hip / Seat: Place tape measurer 8” below waist and measure the fullest part of your hips.

Back Wasit / Waist to Floor: Measure from the nape at the back of the neck to the natural waist line. Then mark this spot, it is the starting point for the Waist to Floor measurement. Combined these measurements should equal the shoulder to floor measurement.

Adult Size Chart:

<i>SIZE</i>	<i>BUST</i>	<i>WAIST</i>	<i>HIPS</i>
<i>X-Small</i>	34	24	36
<i>Small</i>	36	26	38
<i>Medium</i>	38	28	40
<i>Large</i>	41	32	43
<i>X-Large</i>	44	36	46
<i>2X*</i>	47	40	49
<i>3X*</i>	50	44	51
<i>4X*</i>	53	47	54
<i>5X*</i>	56	51	57

Additional Fees*:

*Plus size fees are:

2X & 3X : \$50

4X & 5X : \$100

Custom size fees (Plus size fees are included):

XS — XL : \$75

2X & 3X : \$100

4X & 5X : \$150